

MONTHLY MEMBERSHIP PROGRESS REPORT

LOCATION INDIA

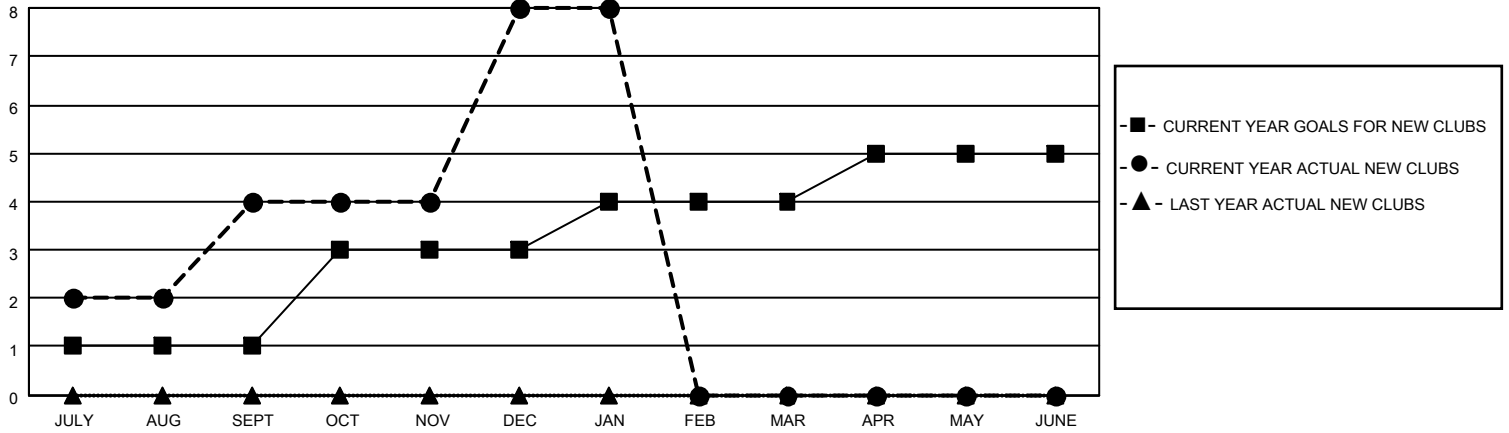
District 320 B

Results as of: 1/31/2021

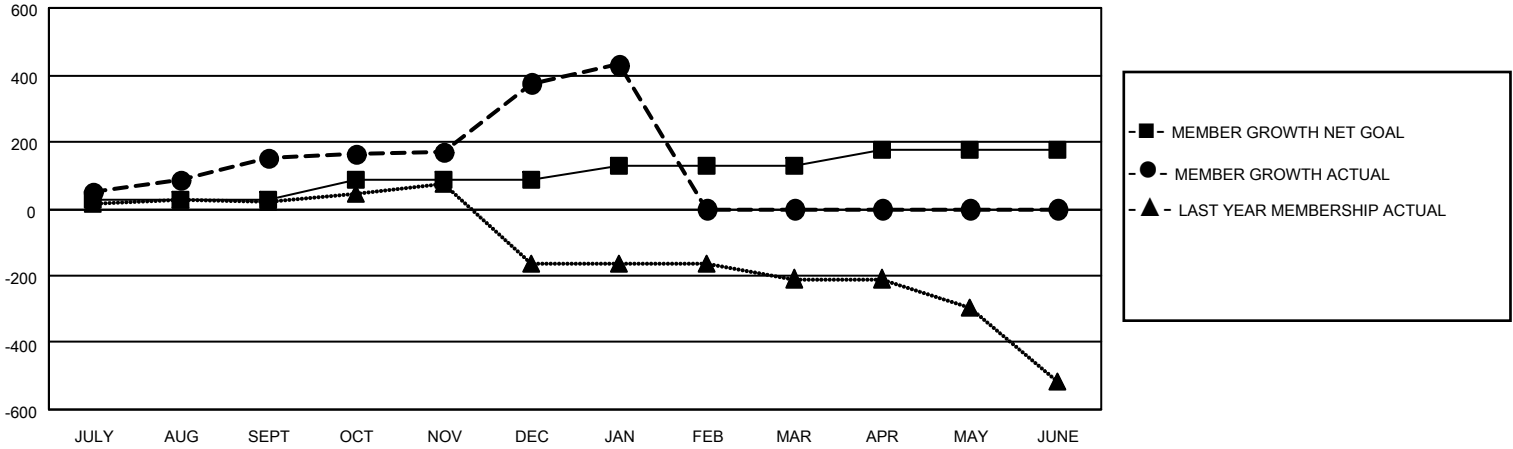
| Clubs | | | |
|-----------------------|---------------|-----------|---------------|
| RESULTS FOR 2020-2021 | | | |
| QUARTER | NEW CLUB GOAL | NEW CLUBS | DROPPED CLUBS |
| JULY/AUG/SEPT | 1 | 4 | 1 |
| OCT/NOV/DEC | 2 | 4 | 0 |
| JAN/FEB/MAR | 1 | 0 | 0 |
| APR/MAY/JUNE | 1 | 0 | 0 |

| Members | | | |
|-----------------------|------------------------|----------------------|--|
| RESULTS FOR 2020-2021 | | | |
| QUARTER | MEMBER GROWTH NET GOAL | MEMBER GROWTH ACTUAL | DROPPED MEMBERS ACTUAL (including transfers) |
| JULY/AUG/SEPT | 29 | 222 | 47 |
| OCT/NOV/DEC | 55 | 303 | 33 |
| JAN/FEB/MAR | 45 | 54 | 0 |
| APR/MAY/JUNE | 45 | 0 | 0 |

GOALS AND ACTUAL NEW CLUBS CUMULATIVE



GOALS AND ACTUAL MEMBERS CUMULATIVE



DROPPED CLUBS: 1

40 CLUBS OF 69 ADDED 1 OR MORE NEW MEMBERS

| <u>GENDER DISTRIBUTION</u> | |
|----------------------------|----------------|
| MALE | 1,428 (62.33%) |
| FEMALE | 863 (37.67%) |

| <u>DROPPED MEMBERS</u> | |
|------------------------|-----------|
| DECEASED | 4 |
| CLUB CANCELLED | 0 |
| OTHER | 76 |
| TOTAL | 80 |

[CLICK HERE FOR CUMULATIVE MEMBERSHIP DATA](#)

| | |
|---------------------------------|-------|
| TOTAL FAMILY UNIT MEMBERS | 1,392 |
| FAMILY MEMBERS PAYING HALF DUES | 763 |